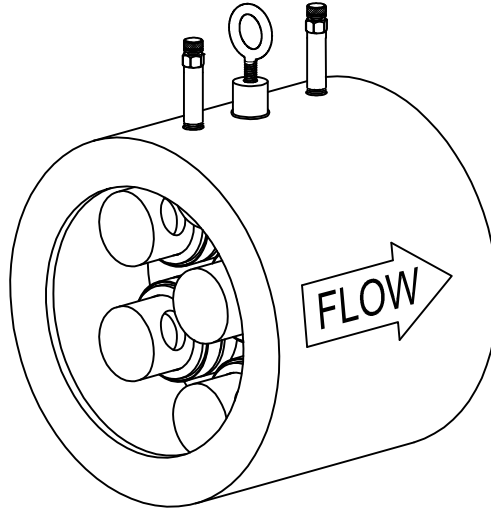




AFLW Series Specifications

Automatic Pressure Independent Flow Limiter Wafer Style



U.S. Patent No. 8,061,195

PRODUCT DESCRIPTION: The AFLW is a wafer type Automatic Pressure Independent Flow Limiting Device with a full flange face. The AFLW is designed to fit between two ANSI Class 150# flanges. The AFLW is supplied with one or more stainless steel flow limiting cartridges that can be removed for cleaning, inspection, and, if necessary, cartridge exchange. The AFLW has two predrilled openings for pressure/ temperature ports, a drain plug, and a lifting lug for ease in installation.

STANDARD MATERIAL SPECIFICATIONS		STANDARD OPERATING SPECIFICATIONS	
Wafer	ASTM A536 Ductile Iron	Control range:	2 psi - 60+ psi
O-Ring	EPDM	Accuracy:	±5%
Flow Cartridge	ASTM A582 Type 303 Stainless Steel	Max Working Pressure:	600 WOG / CWP
Diaphragm	EPDM	Max Operating Temperature:	40°F to 250°F
Spring	Stainless Steel	Start-Up Head Loss:	5 Feet of H ₂ O
PT Port	EPDM Dual Durometer Core	Specification information is provided to assist and is given without obligation or warranty. The Company reserves the right to make changes in design, materials, and/or specifications without notice or liability.	
Lifting Lug	ASTM F541 Steel		

NOTE: The specific ASTM standard may vary and should be confirmed at time of order.

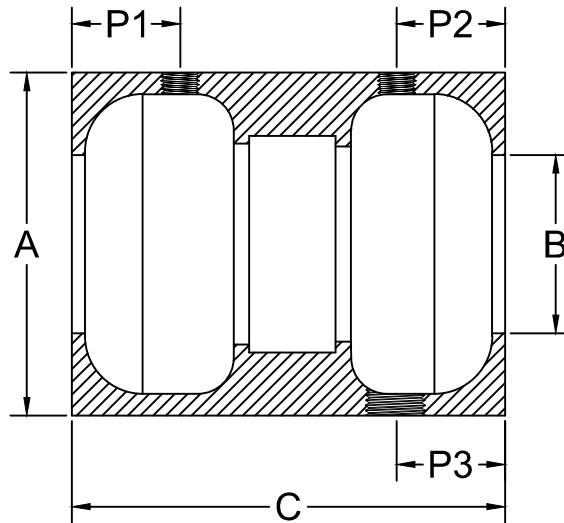
PRODUCT SPECIFICATIONS:

- All flow cartridge wear surfaces shall be stainless steel
- Static orifice design shall maximize the size of the flow orifice across large pressure differentials
- Cartridge(s) shall have a large operational differential range
- Cartridge(s) shall provide continual flow at differential pressures above design limits
- Cartridge(s) shall be removable for cleaning or exchange if required
- AFLW shall have a low start-up pressure to operate with low energy requirements



AFLW Series Dimensions

Automatic Pressure Independent Flow Limiter Wafer Style



SIZE	MODEL	A	B	C	P1	P2	P3	WEIGHT (lbs)	# OF AFL CARTRIDGES	MAX GPM FLOW
2½"	AFLW250	4.5	2.5	8.0	1.5	1.3	1.3	14	1	180
3"	AFLW300	4.5	2.5	8.0	1.5	1.3	1.3	14	1	180
4"	AFLW400	6.7	4.2	9.0	2.0	2.0	2.0	25	2	360
6"	AFLW600	8.6	6.1	9.0	2.0	2.0	2.0	35	4	720

Note: All dimensions, weights, and materials are subject to minor variations. Consult with factory for confirmation of dimensions and material specifications.