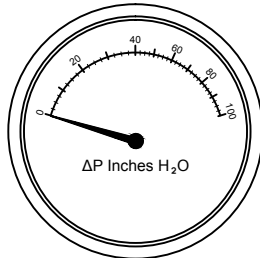
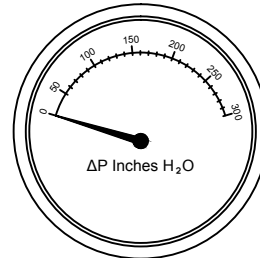




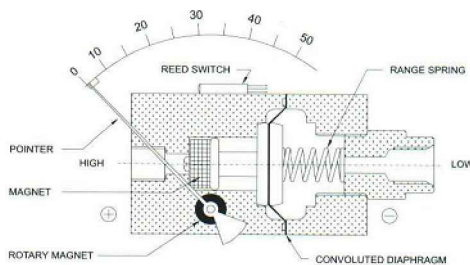
MK100 & MK300 Specifications Portable Meter Kit



Model MK100 0-100"



Model MK300 0-300"



PRODUCT DESCRIPTION:

Body Material:	Aluminum (anodized semi hard)
Dial Size:	4.5 Inches (115 mm)
Connection:	¼" NPT (F) (Standard)
Porting:	In-line (Standard)
Case Type:	Standard
Window:	Glass (Standard)
Seal:	Buna-N (Standard)
Standard Range:	0-100" (MK100); 0-300" (MK300)
Accuracy:	±2% of the FSD (Ascending)
Migration:	No migration; Zero leakage from high to low port
First Marking on the Scale:	15% of the FSD
Sensing Element:	Diaphragm
Wetted Parts:	Diaphragm, body material, SS302 spring & ceramic magnet
Mounting:	Direct, front flange & 2" pipe mounting
Max. Working Pressure:	1500 psi
Max. Process Temperature:	80°C - 175°F
Over Range Protection:	Up to the max. working pressure from high side

METER KIT CONSISTS OF:

- 1 - Pressure Differential Meter (4.5" Face),
- 2 - 10' Hoses for connection, (RED = High Pressure, GREEN = Low Pressure)
- 2 - Service Valves
- 1 - Storage Case
- 1 - Mounting Cable